

****Loop Road Closure Update****

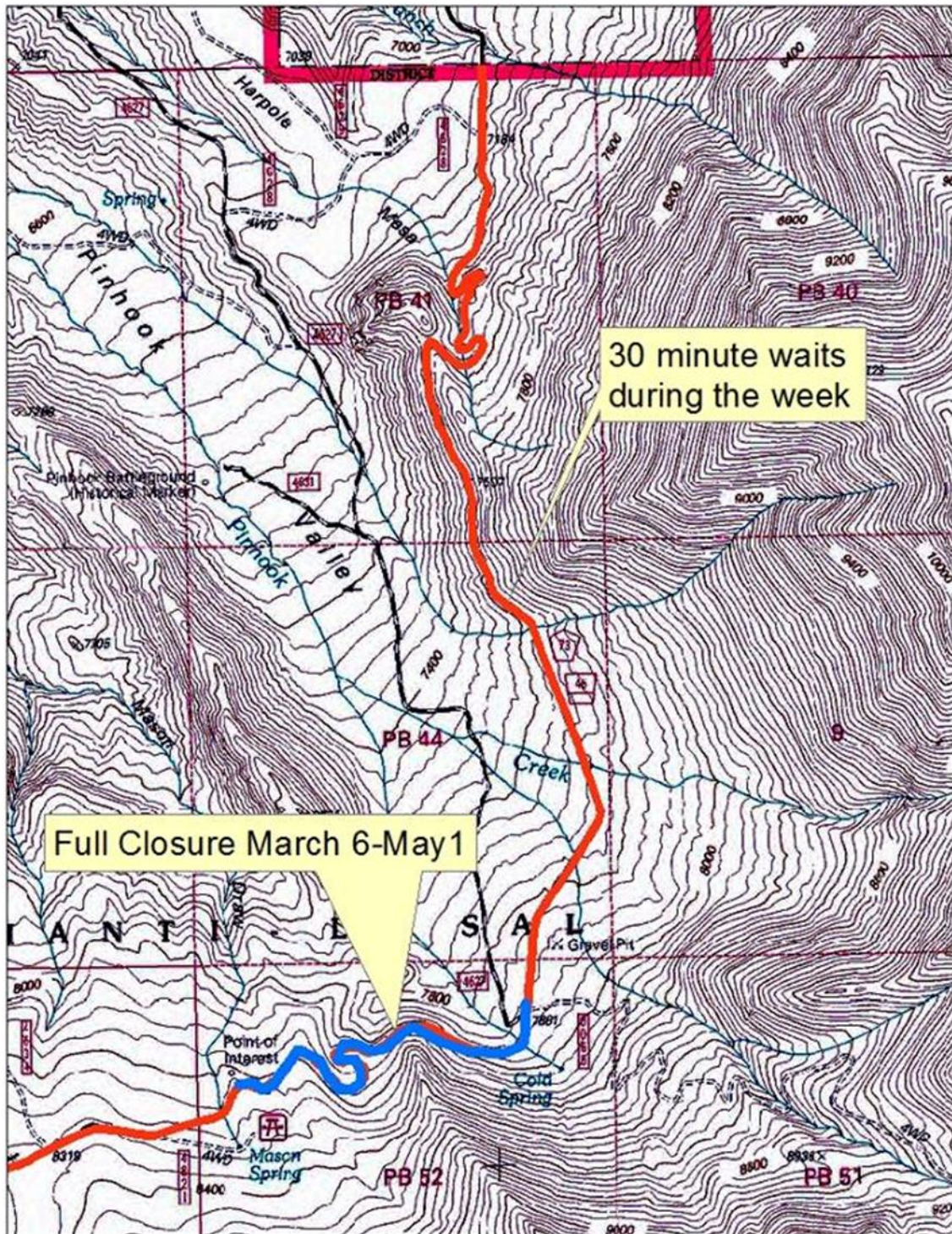
Starting Monday March 6th the La Sal Loop Road will be closed to all vehicles and bikes between Miners Basin and the Castle Valley Overlook, until May 1st.

Starting May 1st the La Sal Loop Road north of the Sand Flats Road will be closed during the week to all vehicles and bikes and open on the weekends. Expect delays on other portions of the road between the Mill Creek Bridge and Sand Flats Road

Access to Warner Lake and Oowah Lake will remain open but visitors will need to use the southern end of the Loop Road for access.

The Loop Road portion of the Kokopelli Trail will be impacted.

Plan your trip to the La Sals accordingly and call the Moab Ranger Station (435-259-7155) with any questions.



30 minute waits during the week

Full Closure March 6-May 1

